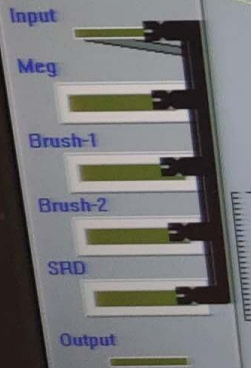
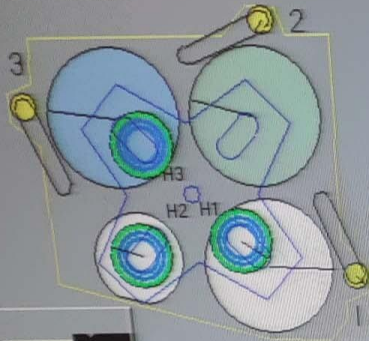




ed Materials Mirra CMP mp286.2_36

Recipe: Cassette Tools Constants Debug Log Diagnostics Help

2024 00:00:00 Warning Log File \ws240526.txt (60 days prior to Wet Idle Mode Processing



Header	Motion	States	Slurry
Recipe Name:			
Step:			
Time In Step:			
Time In Recipe:			
Platen RPM:			
Head RPM:			
Head Sweep:			
Inner Tube:			
Ret Ring:			
Membrane:			
Membrane Vac:			
L1: DIW 200 /			
L3: None 0 / 0			

Platen 1	Platen 2	Platen 3
<input checked="" type="checkbox"/> DI Water Only	<input checked="" type="checkbox"/> DI Water Only	<input checked="" type="checkbox"/> DI Water Only
Slurry Wet Idle Recipe: (none)	Slurry Wet Idle Recipe: (none)	Slurry Wet Idle Recipe: (none)
Slurry Wet Pad Recipe: (none)	Slurry Wet Pad Recipe: (none)	Slurry Wet Pad Recipe: (none)
Wet Pad Idle Time: 72 secs	Wet Pad Idle Time: 72 secs	Wet Pad Idle Time: 72 secs

Status: Washing Head 2...

	Head			
	1	2	3	4
Cycles:	2878	2877	2877	0

ABORT STOP START CLOSE

Pad Cond 1:	3M change at 80 hrs	4.92
Pad Cond 2:	3M change at 80 hrs	3.71
Pad Cond 3:	Not In Use	0.00

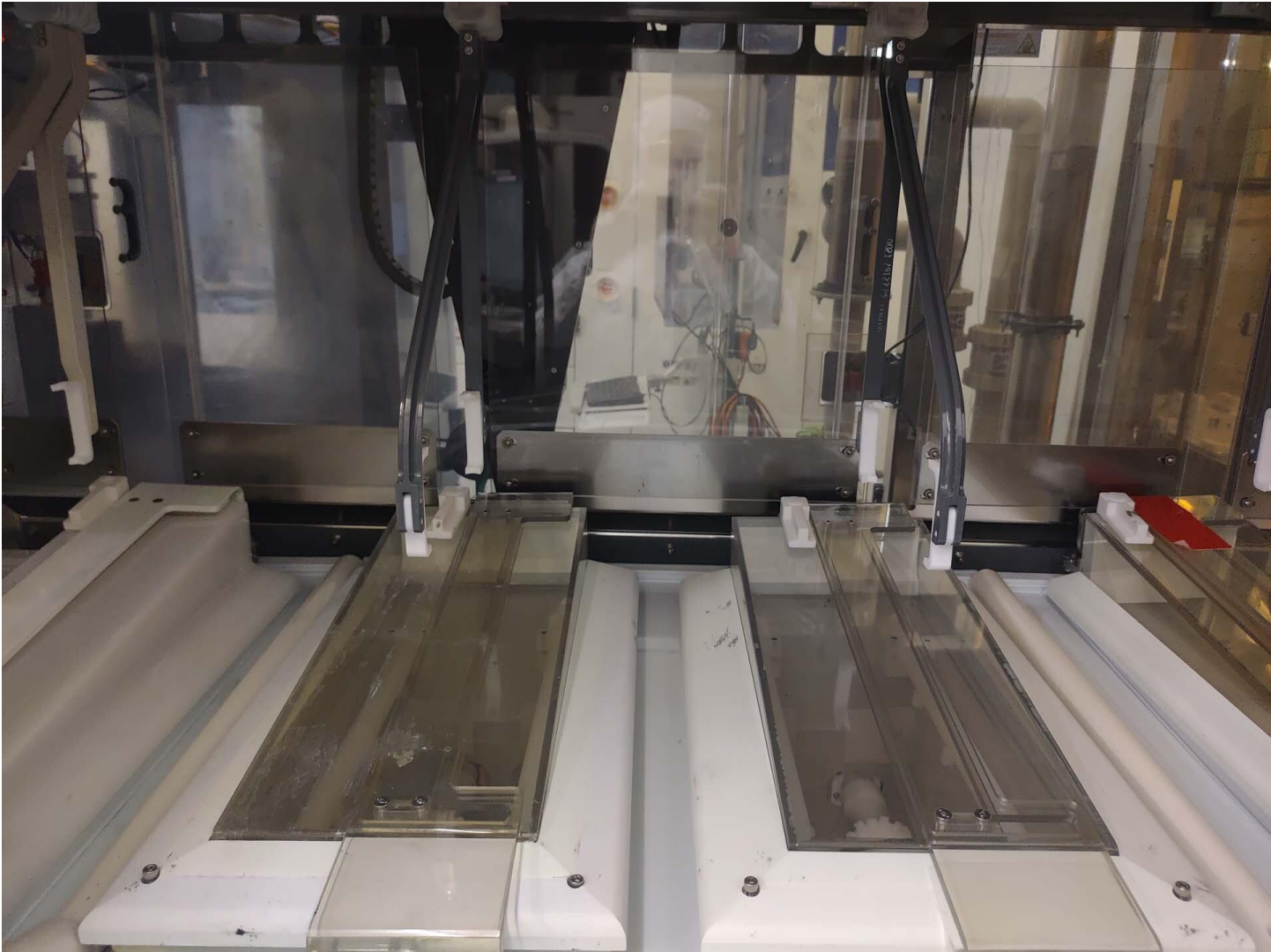
SMIF Ports	Description	Num Cycles
Port 1:		114530
Port 2:		95862
Port 3:		11484
Port 4:		0

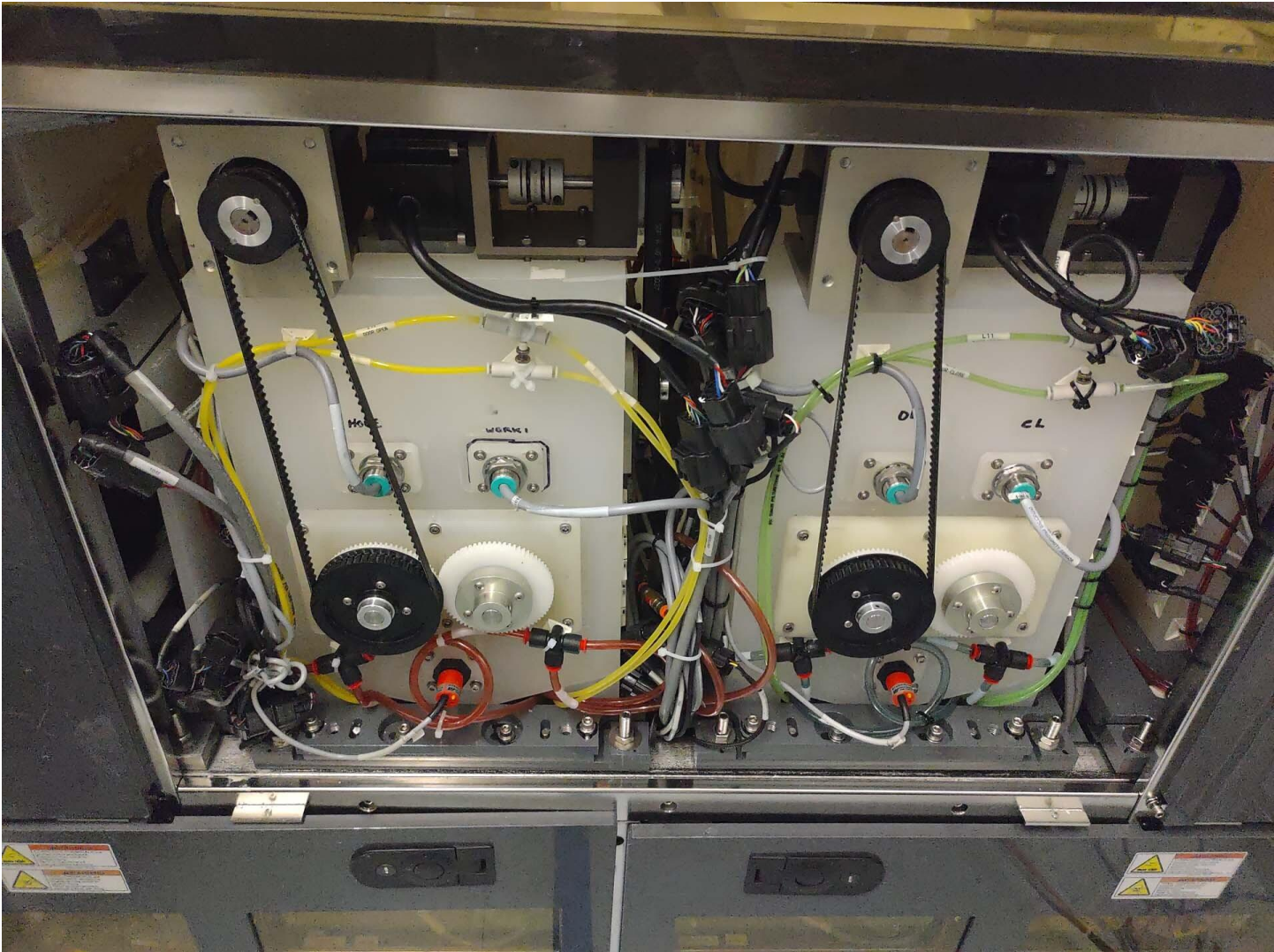
PPID: none.cas: 1 5 10 15 20 25

Map Cassette 1... Map Cassette 2... Map Cassette 3...

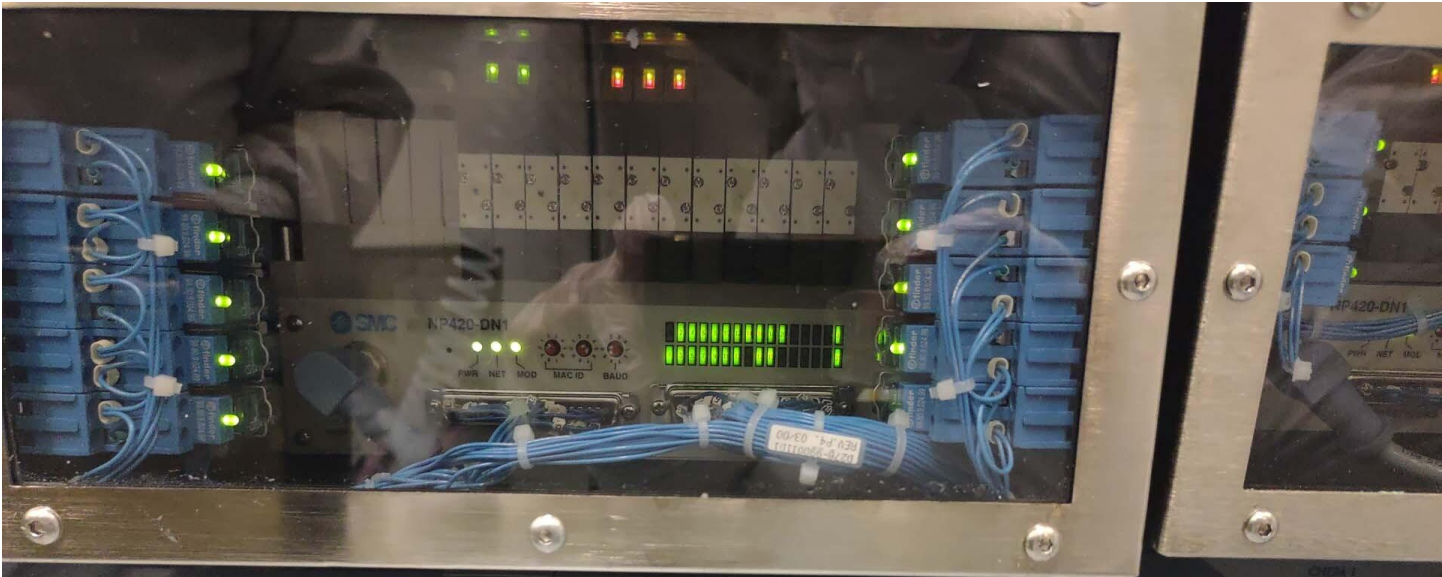
Start: Mesa << Verion cb83.2... Applied Materials Mirra... Fabs Daemon 1.35 AMGEM Address Go 10:05 AM

ThinkVision







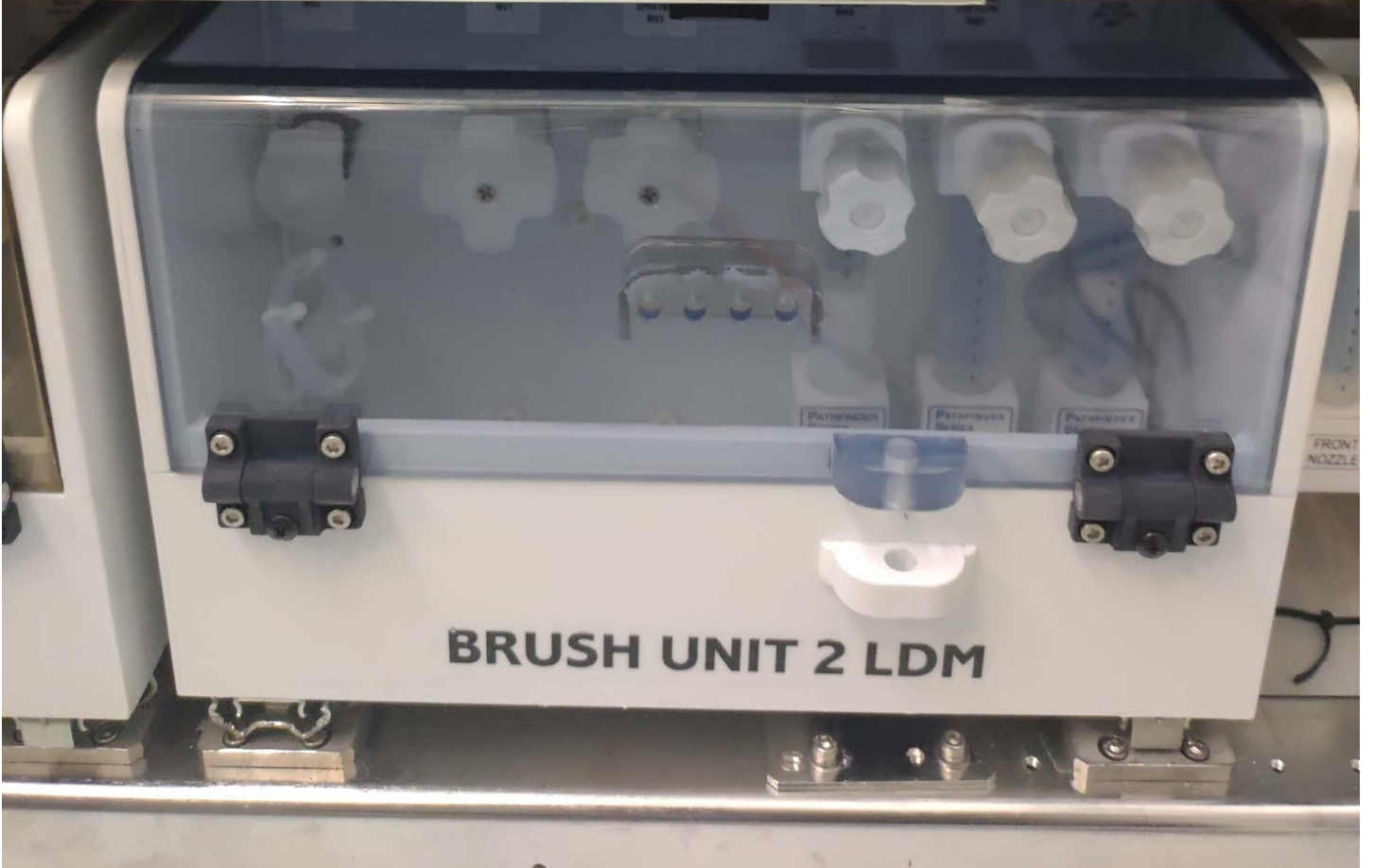


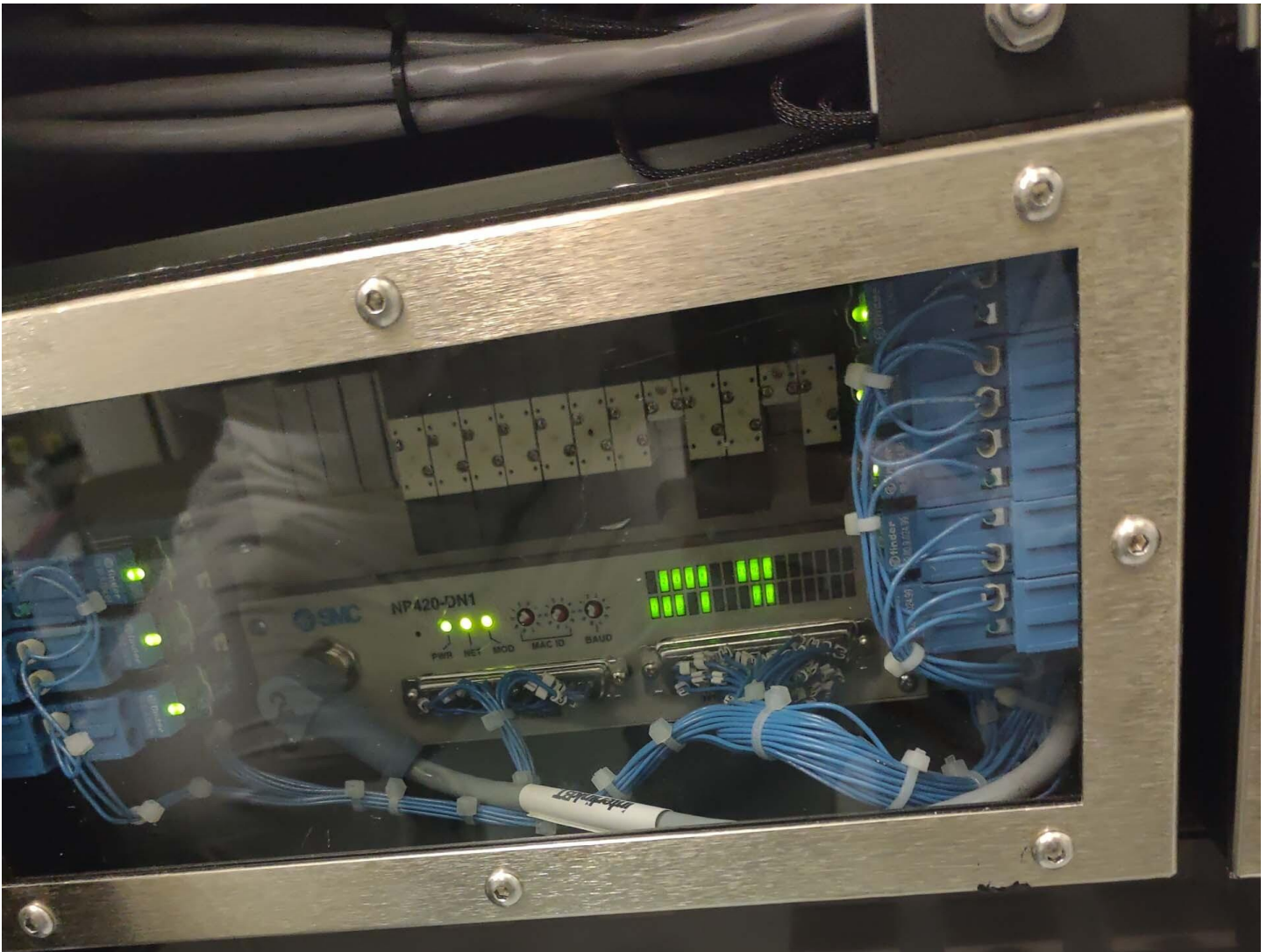
WARNING
CORROSIVE CHEMICALS are located within enclosure. Exposure may result in severe injury. Refer to maintenance manual before servicing.
800-2148 REV. A

WARNING
TOXIC CHEMICALS are located within enclosure. Exposure may result in severe injury. Refer to maintenance manual before servicing.
800-2148 REV. A

WARNING
CORROSIVE CHEMICALS are located within enclosure. Exposure may result in severe injury. Refer to maintenance manual before servicing.
800-2148 REV. A







WARNING
CORROSIVE CHEMICALS are located within enclosure. Exposure may result in severe injury. Refer to maintenance manual before servicing.
0060-2146B REV. A

WARNING
TOXIC CHEMICALS are located within enclosure. Exposure may result in severe injury. Refer to maintenance manual before servicing.
0060-2146B REV. A

BRUSH UNIT 1 LDM



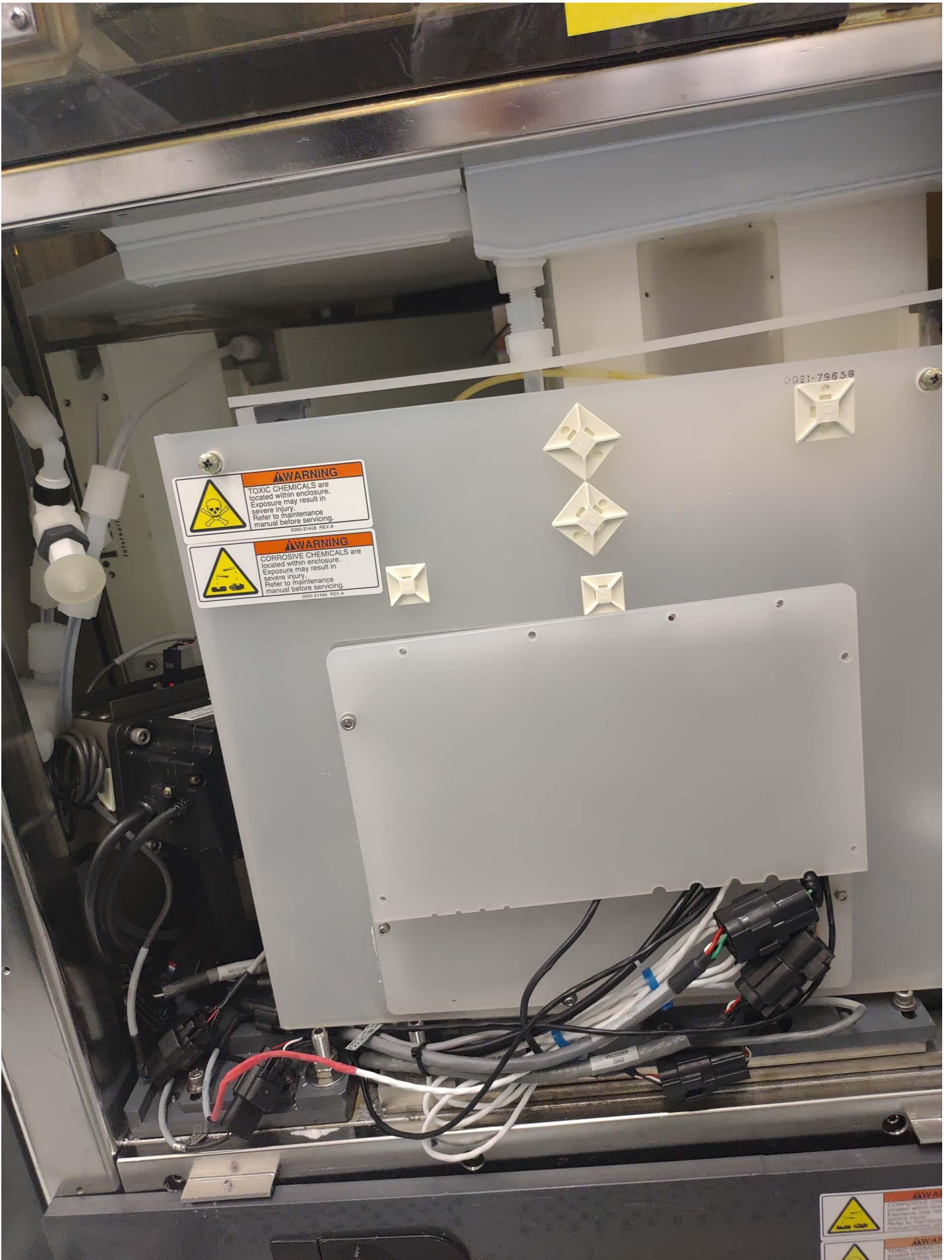
WARNING
TOXIC CHEMICALS are located within enclosure. Exposure may result in severe injury. Refer to maintenance manual before servicing.

WARNING
CORROSIVE CHEMICALS are located within enclosure. Exposure may result in severe injury. Refer to maintenance manual before servicing.

0021-79639

WARNING
TOXIC CHEMICALS are located within enclosure. Exposure may result in severe injury. Refer to maintenance manual before servicing.

WARNING
CORROSIVE CHEMICALS are located within enclosure. Exposure may result in severe injury. Refer to maintenance manual before servicing.



0021-79639

WARNING
TOXIC CHEMICALS are located within enclosure. Exposure may result in severe injury. Refer to maintenance manual before servicing.
000-21460 REV A

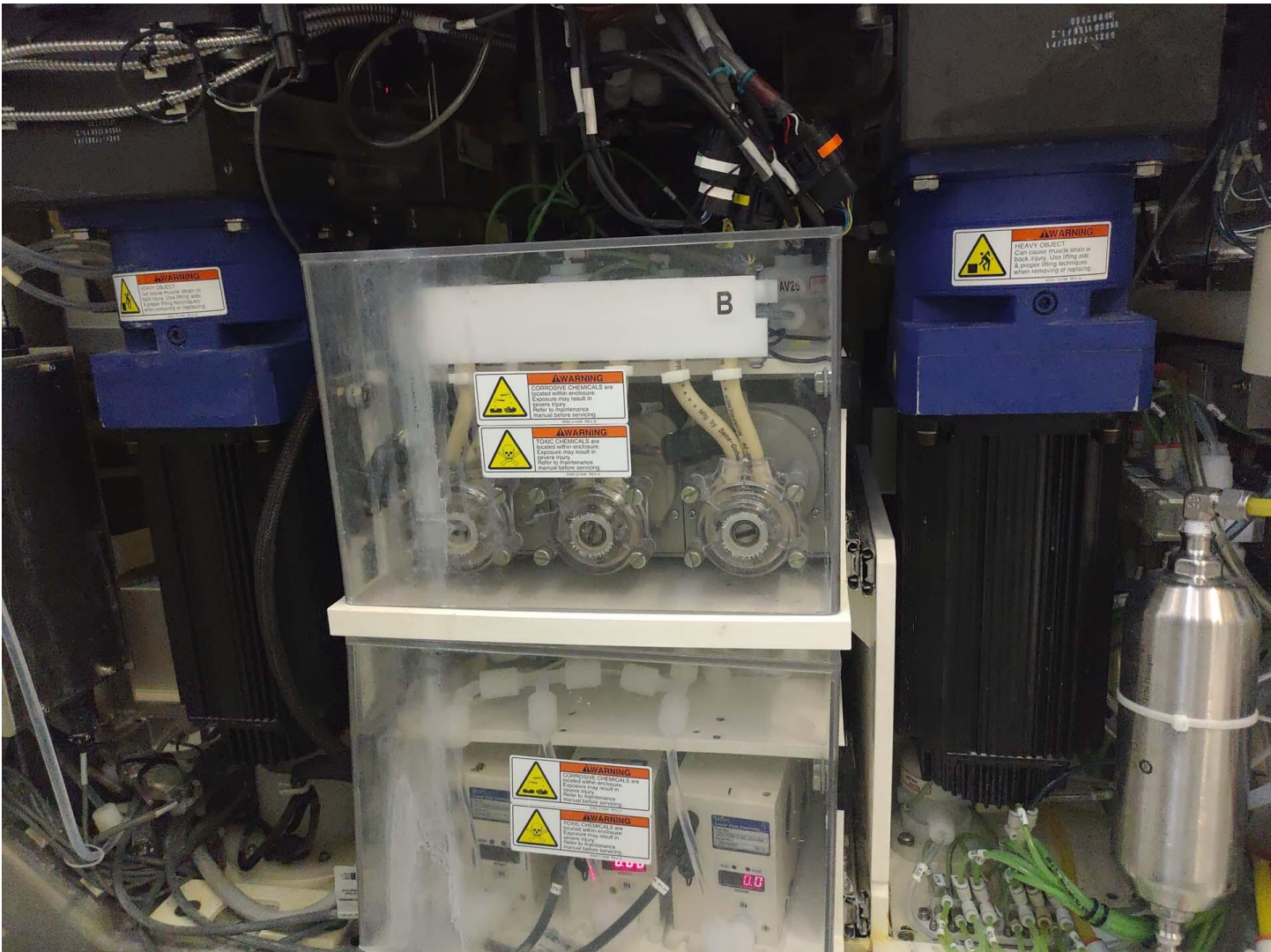
WARNING
CORROSIVE CHEMICALS are located within enclosure. Exposure may result in severe injury. Refer to maintenance manual before servicing.
000-21460 REV A

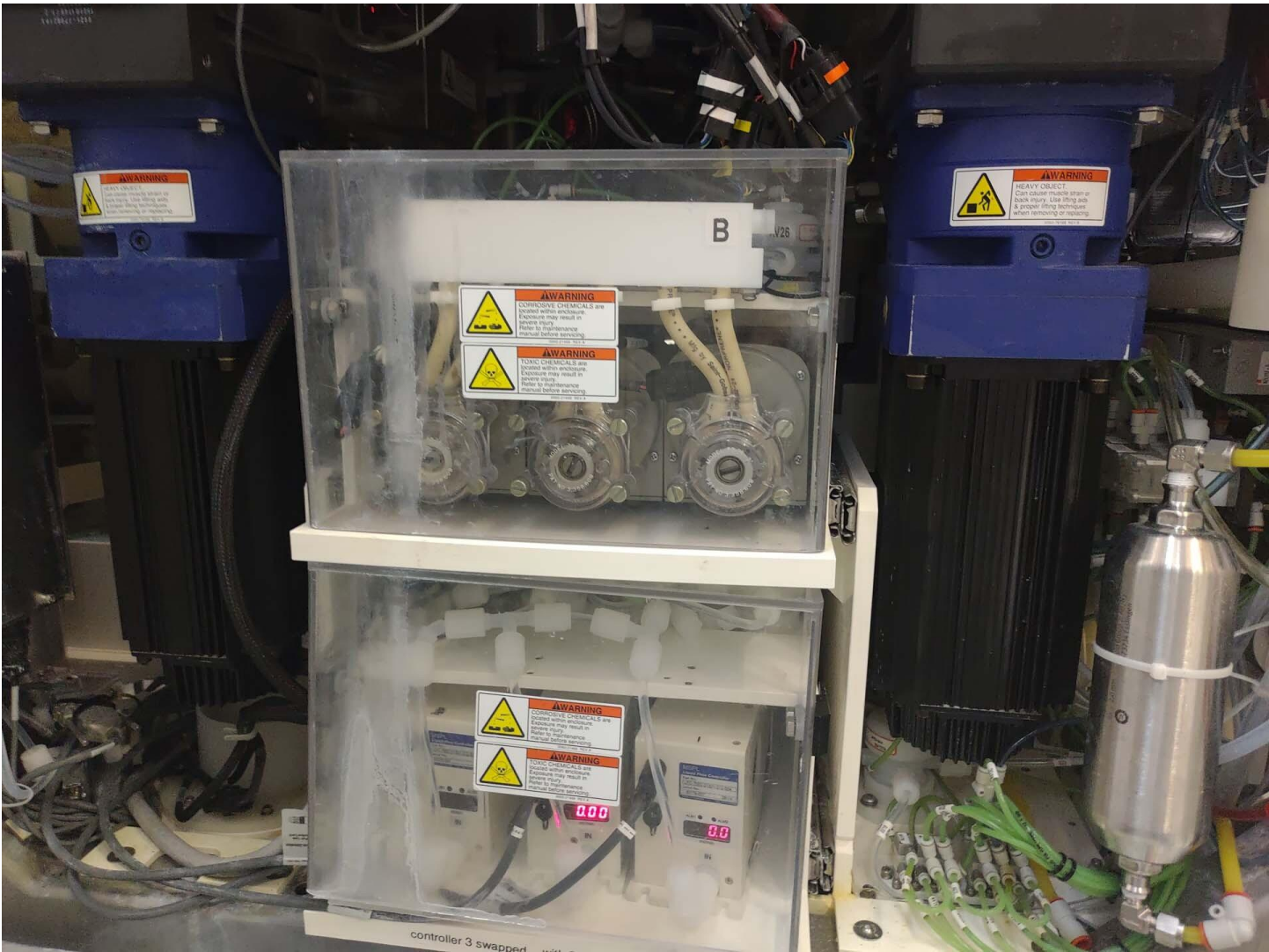
WARNING
CORROSIVE CHEMICALS are located within enclosure. Exposure may result in severe injury. Refer to maintenance manual before servicing.
WARNING
TOXIC CHEMICALS are located within enclosure. Exposure may result in severe injury. Refer to maintenance manual before servicing.



WARNING
TOXIC CHEMICALS are located within enclosure. Exposure may result in severe injury. Refer to maintenance manual before servicing.
0060-21468 REV.A

WARNING
CORROSIVE CHEMICALS are located within enclosure. Exposure may result in severe injury. Refer to maintenance manual before servicing.
0060-21468 REV.A





WARNING
Corrosive chemicals are present within enclosure. Exposure may result in severe injury. Refer to the instruction manual before servicing.

WARNING
Corrosive chemicals are present within enclosure. Exposure may result in severe injury. Refer to the instruction manual before servicing.

WARNING
Corrosive chemicals are present within enclosure. Exposure may result in severe injury. Refer to the instruction manual before servicing.

WARNING
Corrosive chemicals are present within enclosure. Exposure may result in severe injury. Refer to the instruction manual before servicing.

WARNING
Corrosive chemicals are present within enclosure. Exposure may result in severe injury. Refer to the instruction manual before servicing.

0.00

B

V26

WARNING
HEAVY OBJECT
Can cause muscle strain or back injury. Use proper technique & proper lifting techniques when removing or installing.

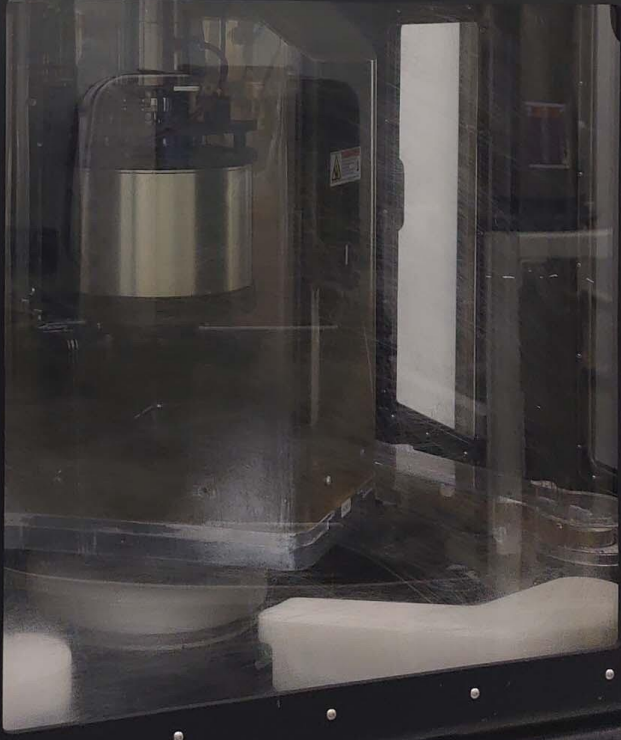
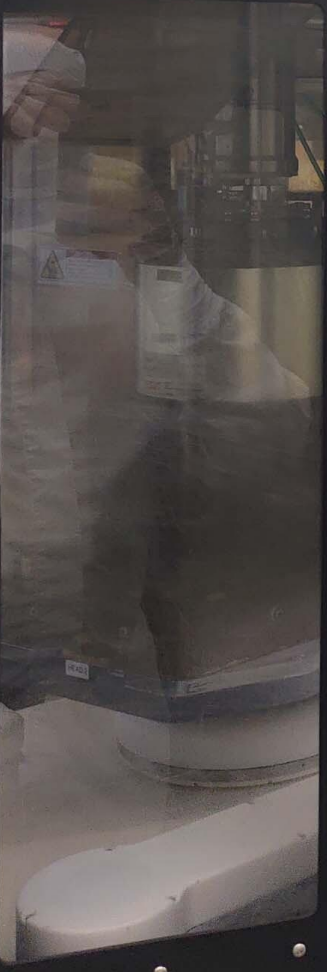
controller 3 swapped

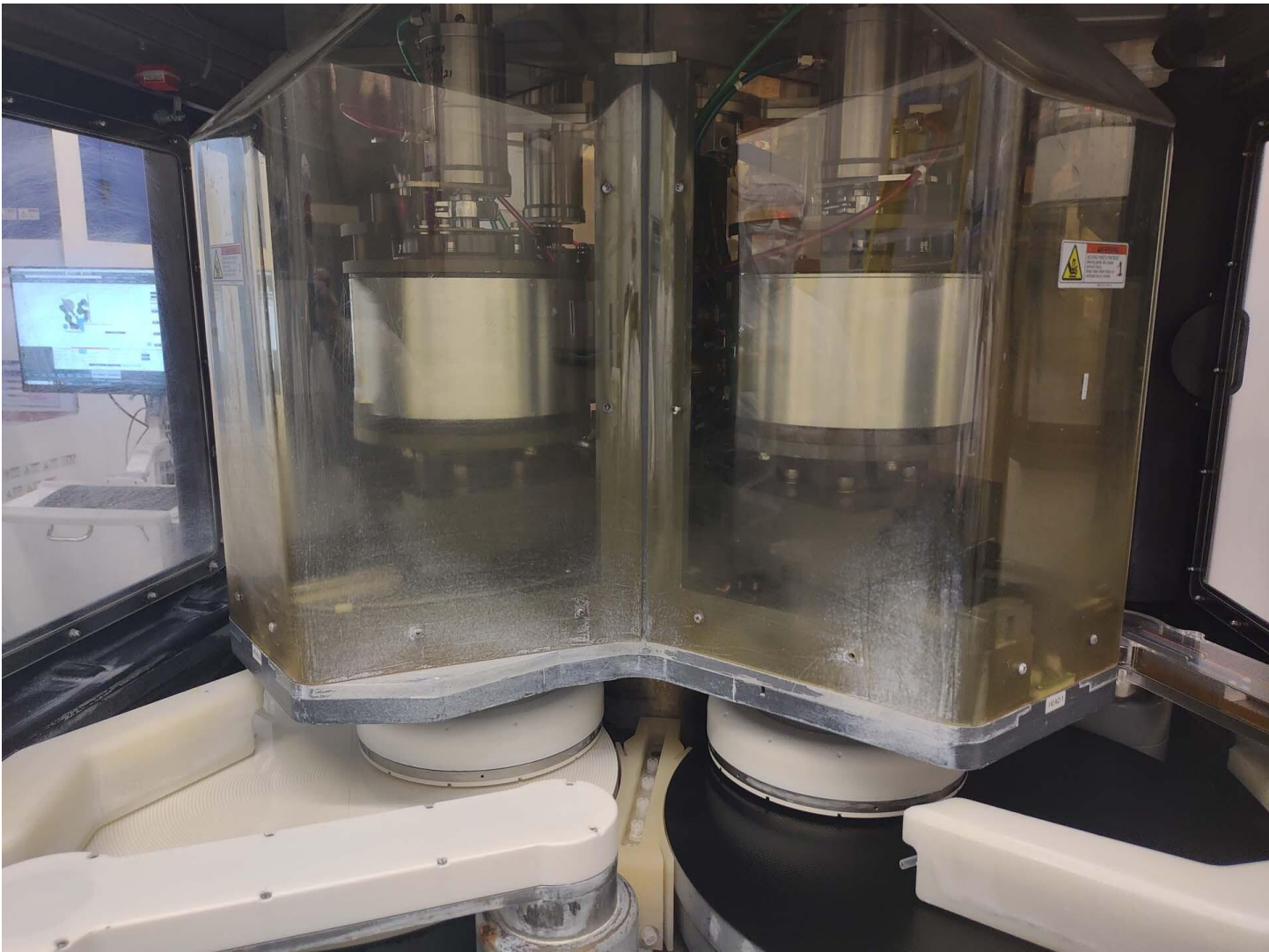


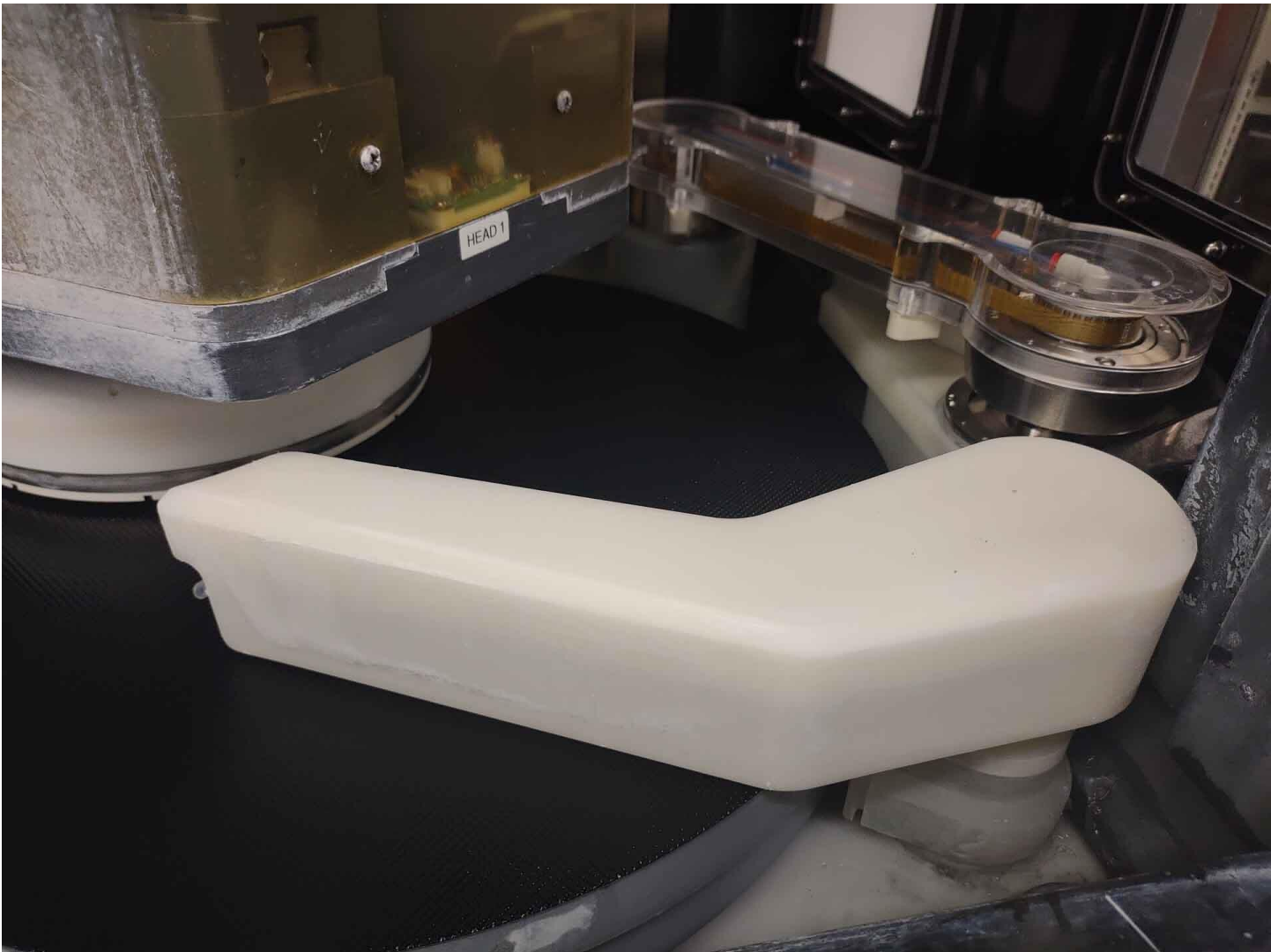
ED MATERIALS®

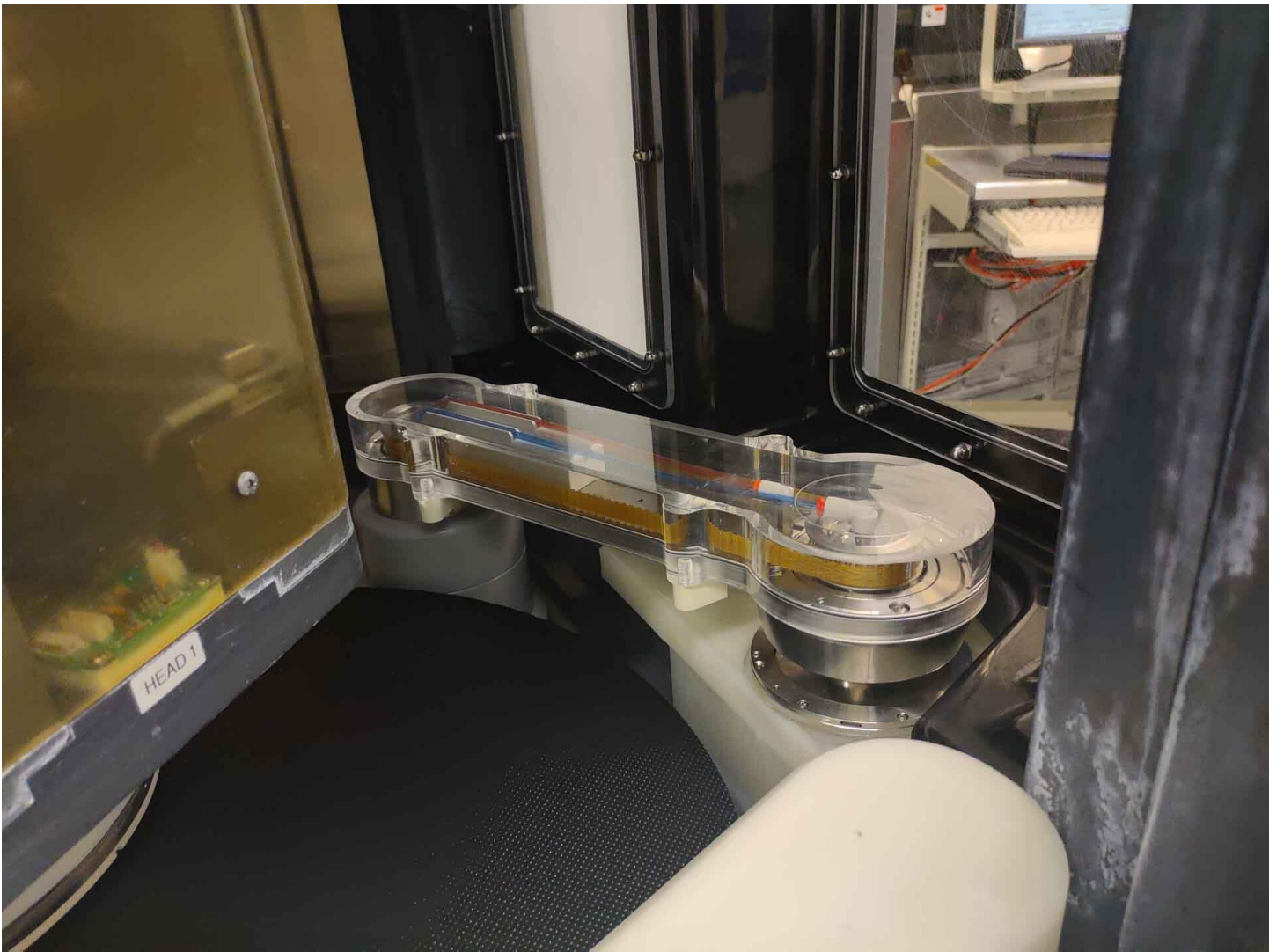


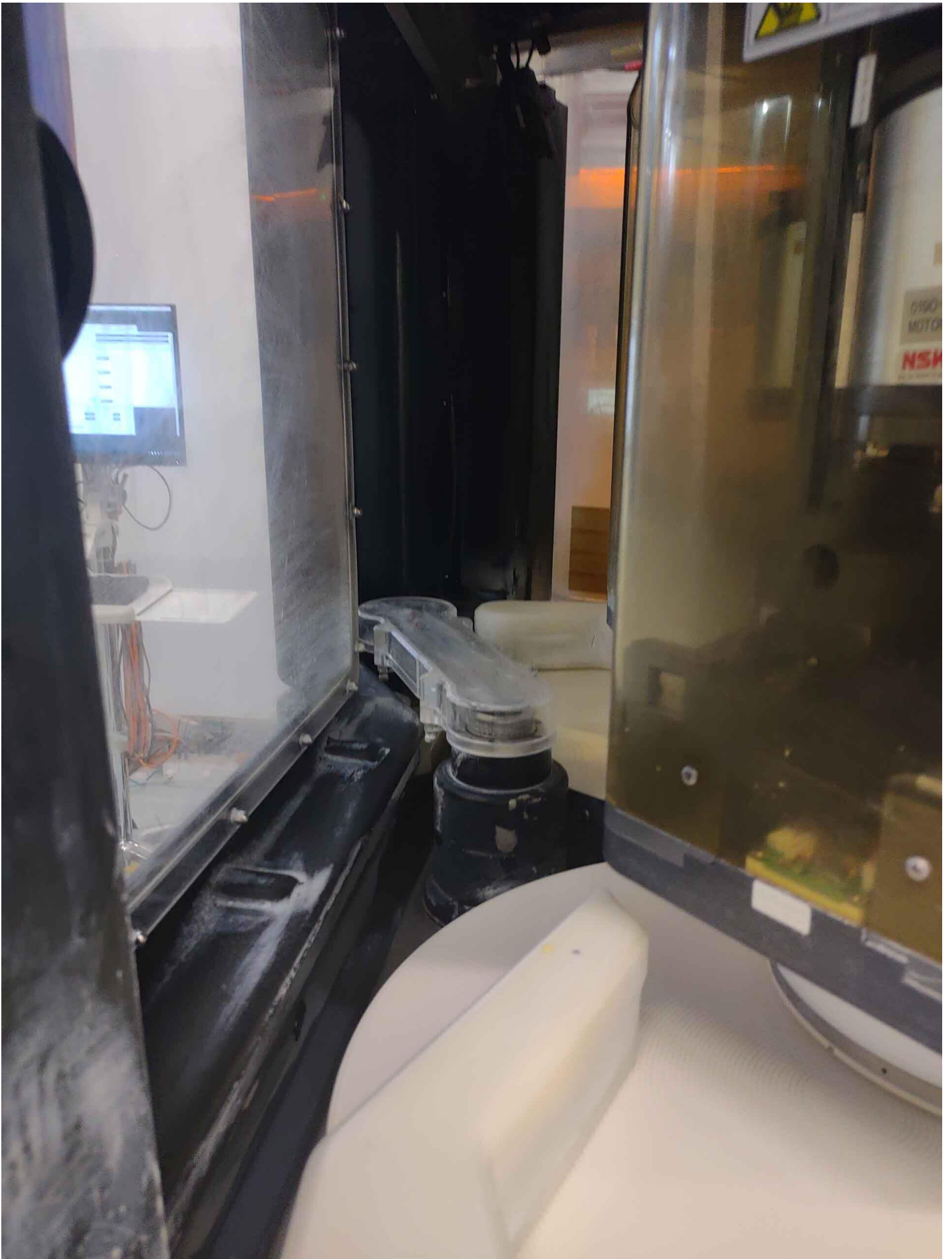
MIRRA®





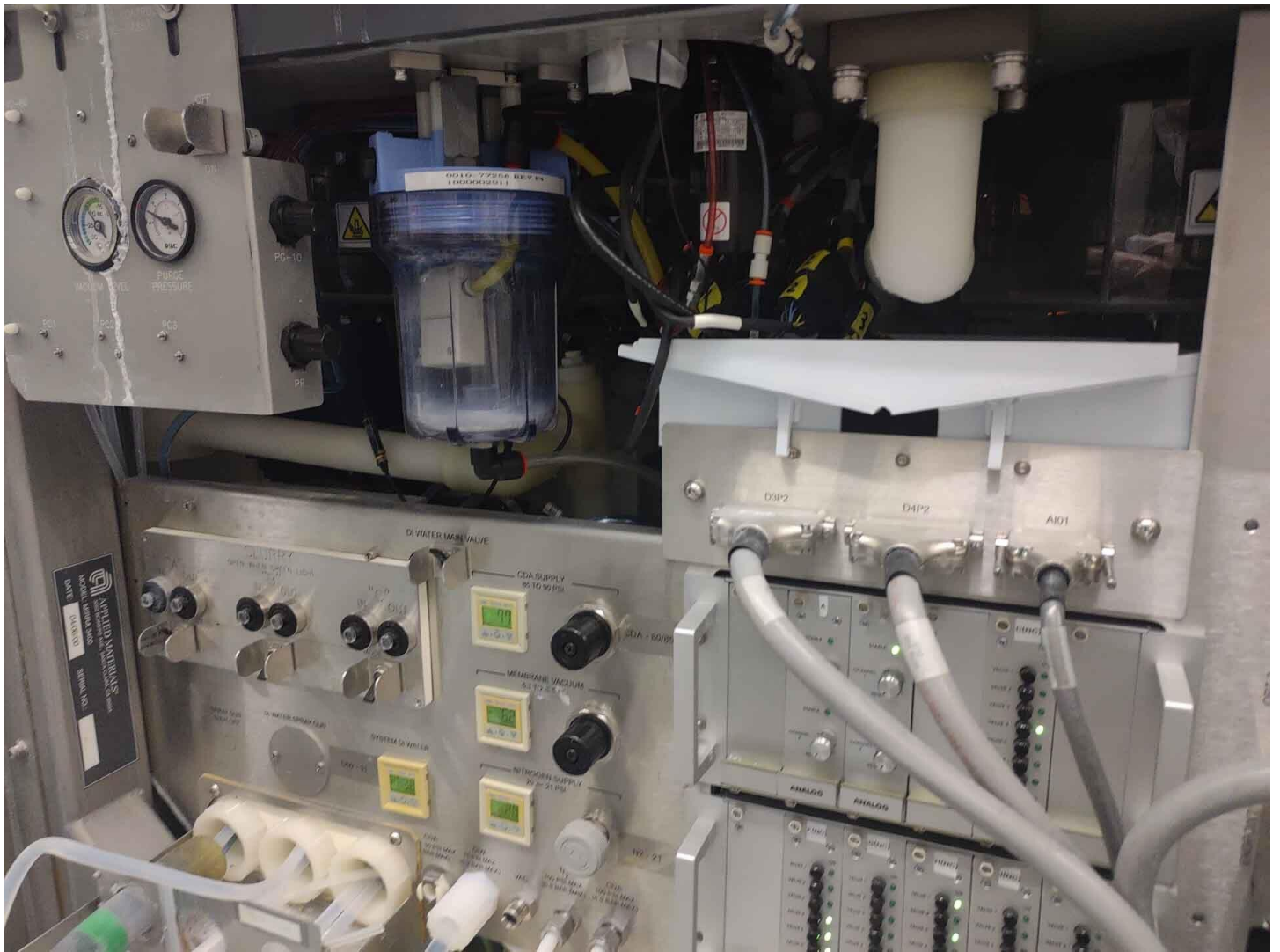










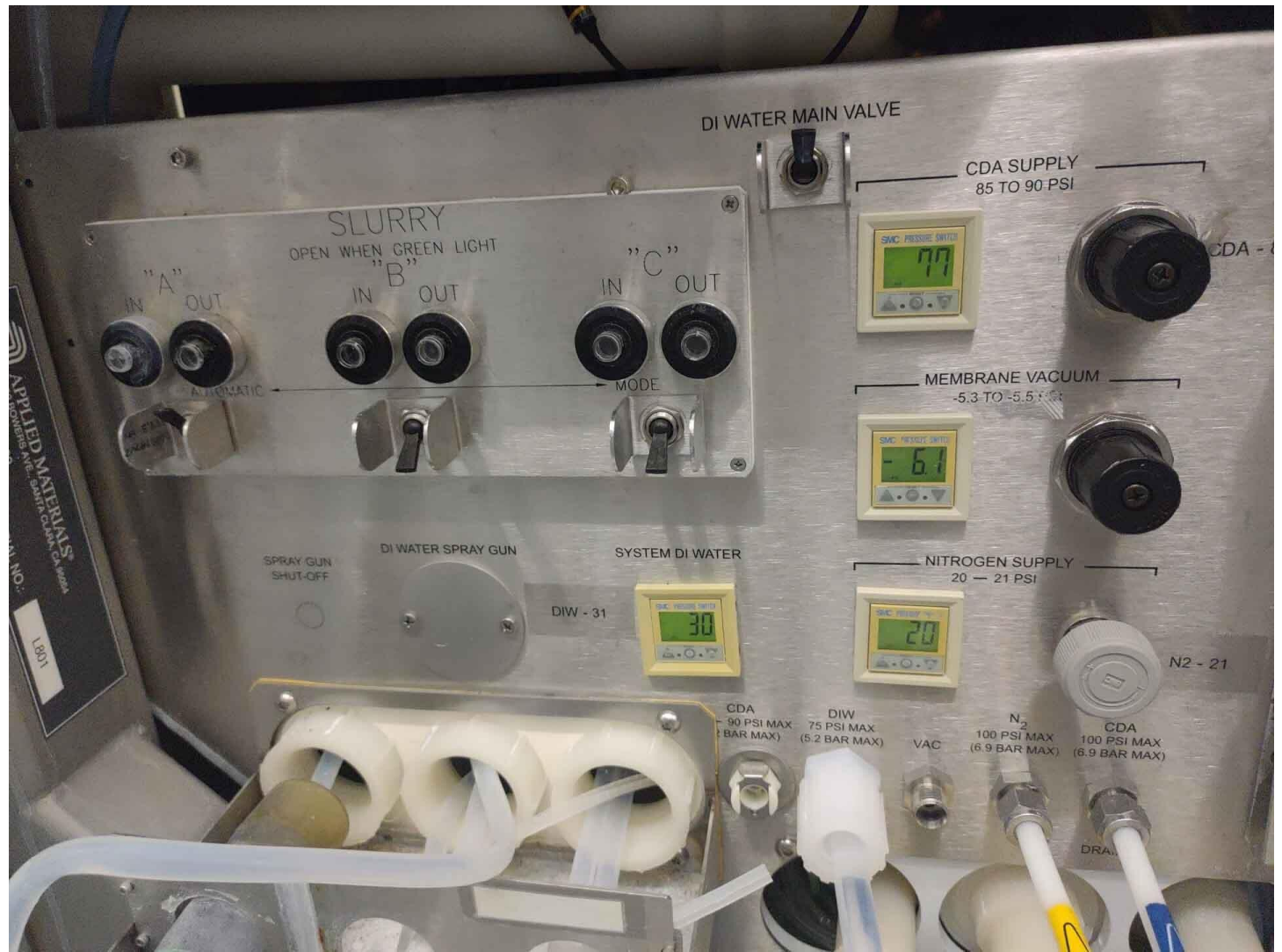


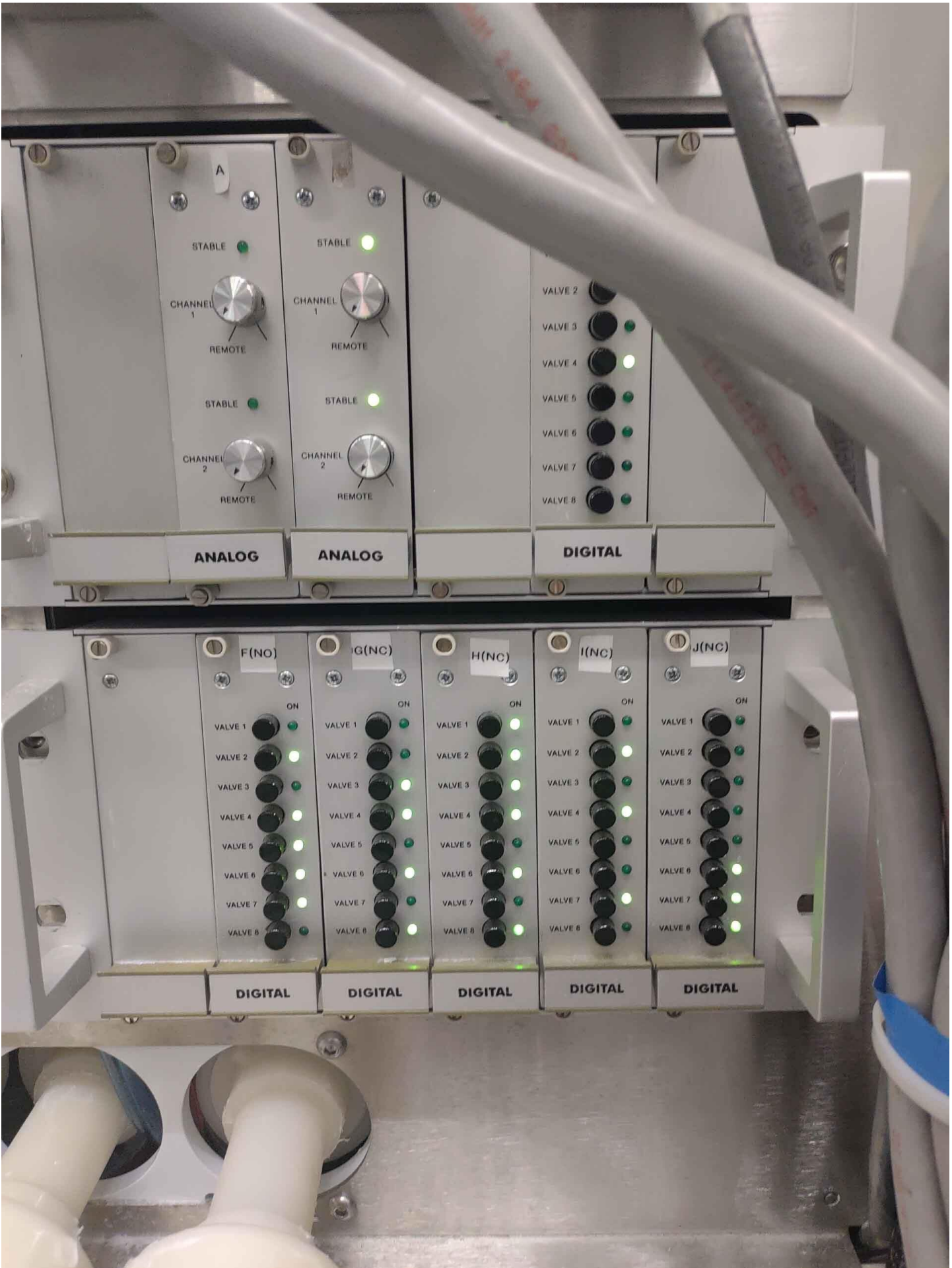


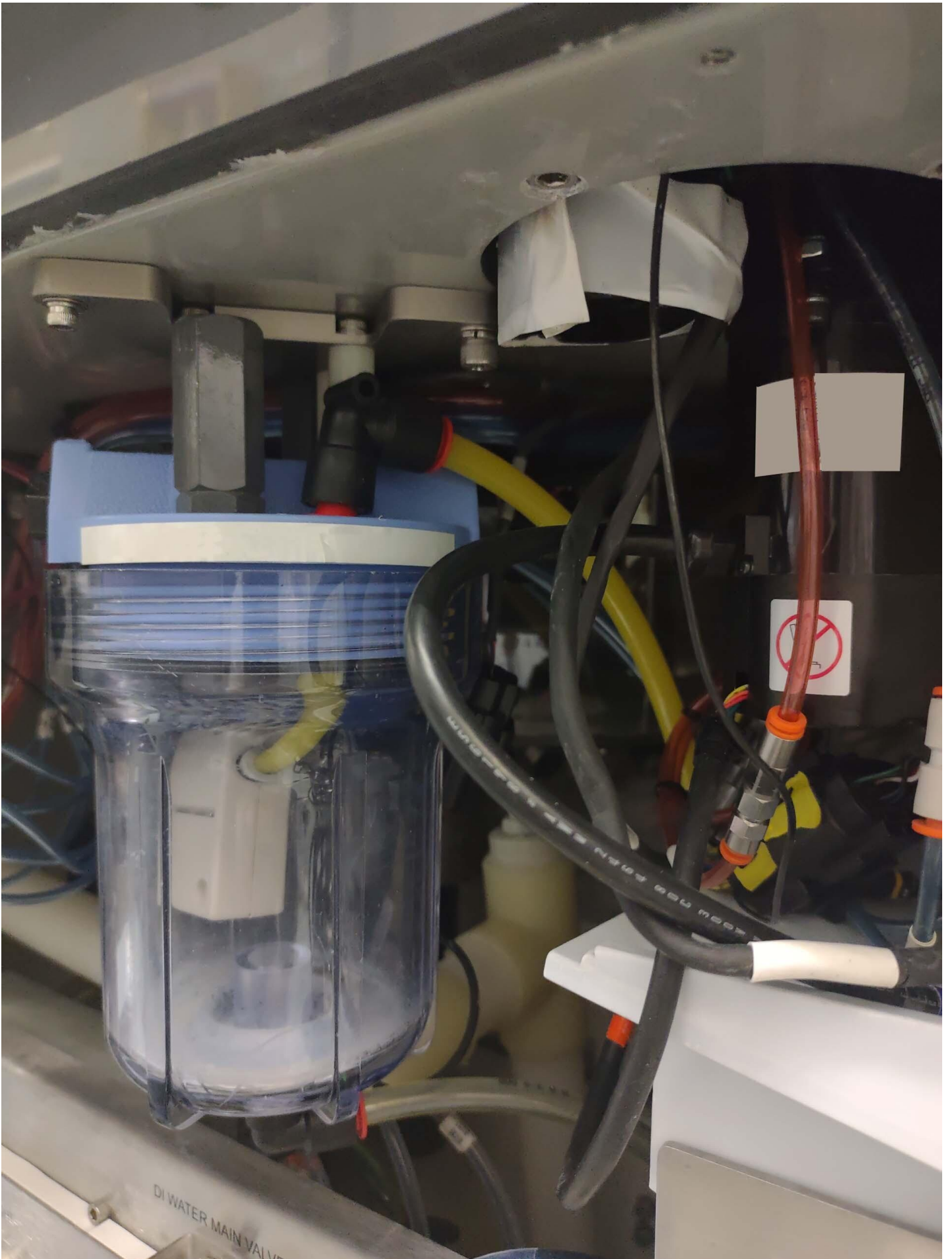



APPLIED MATERIALS
3050 BOWERS AVE., SANTA CLARA, CA 95054
MODEL: MIPRA 3400
DATE: 04/06/00
SERIAL NO.: [REDACTED]

IN "A"
OUT
AUTOMATIC
SPRAY GUN SHUT-OFF
DI WATER S



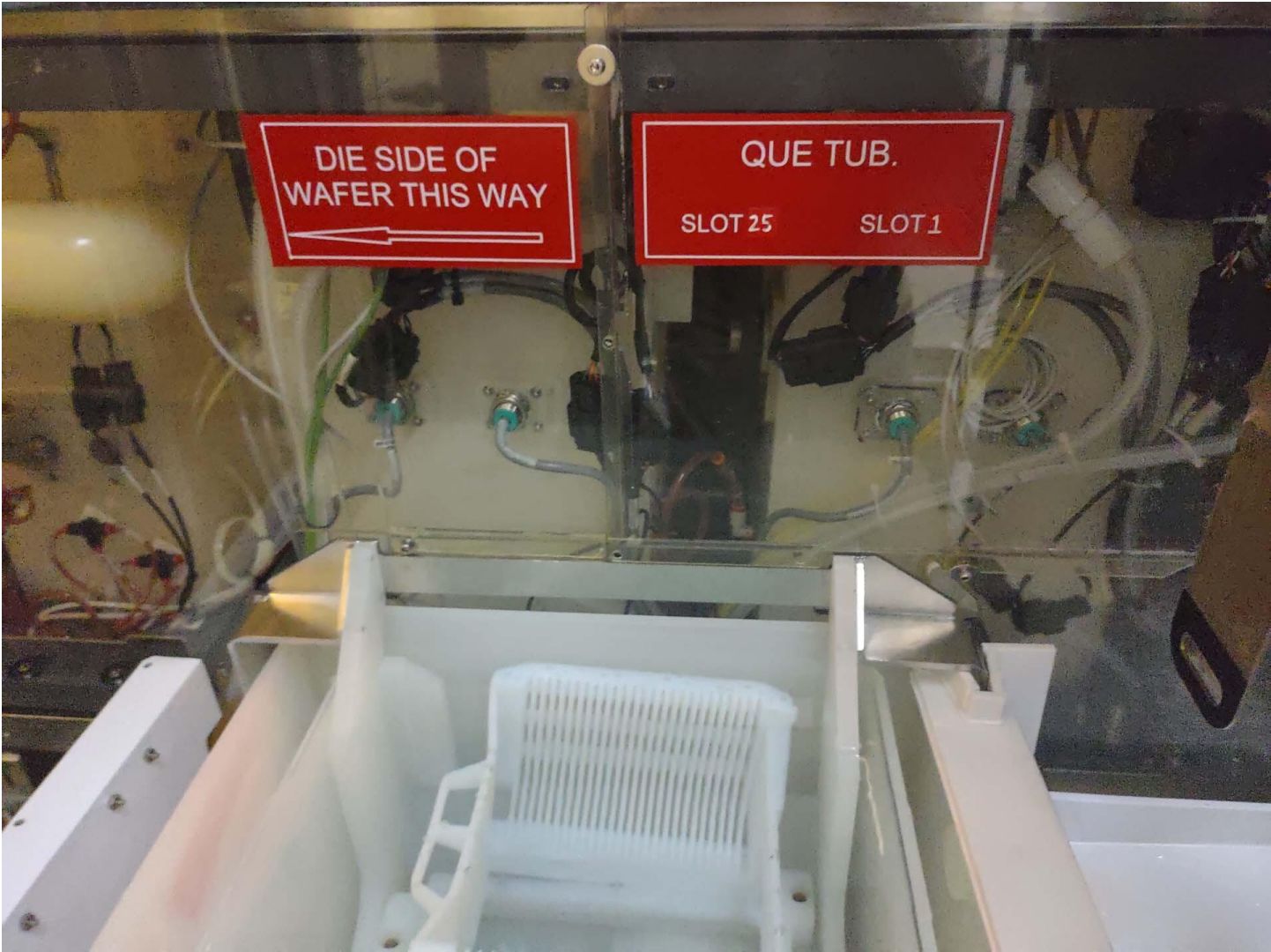




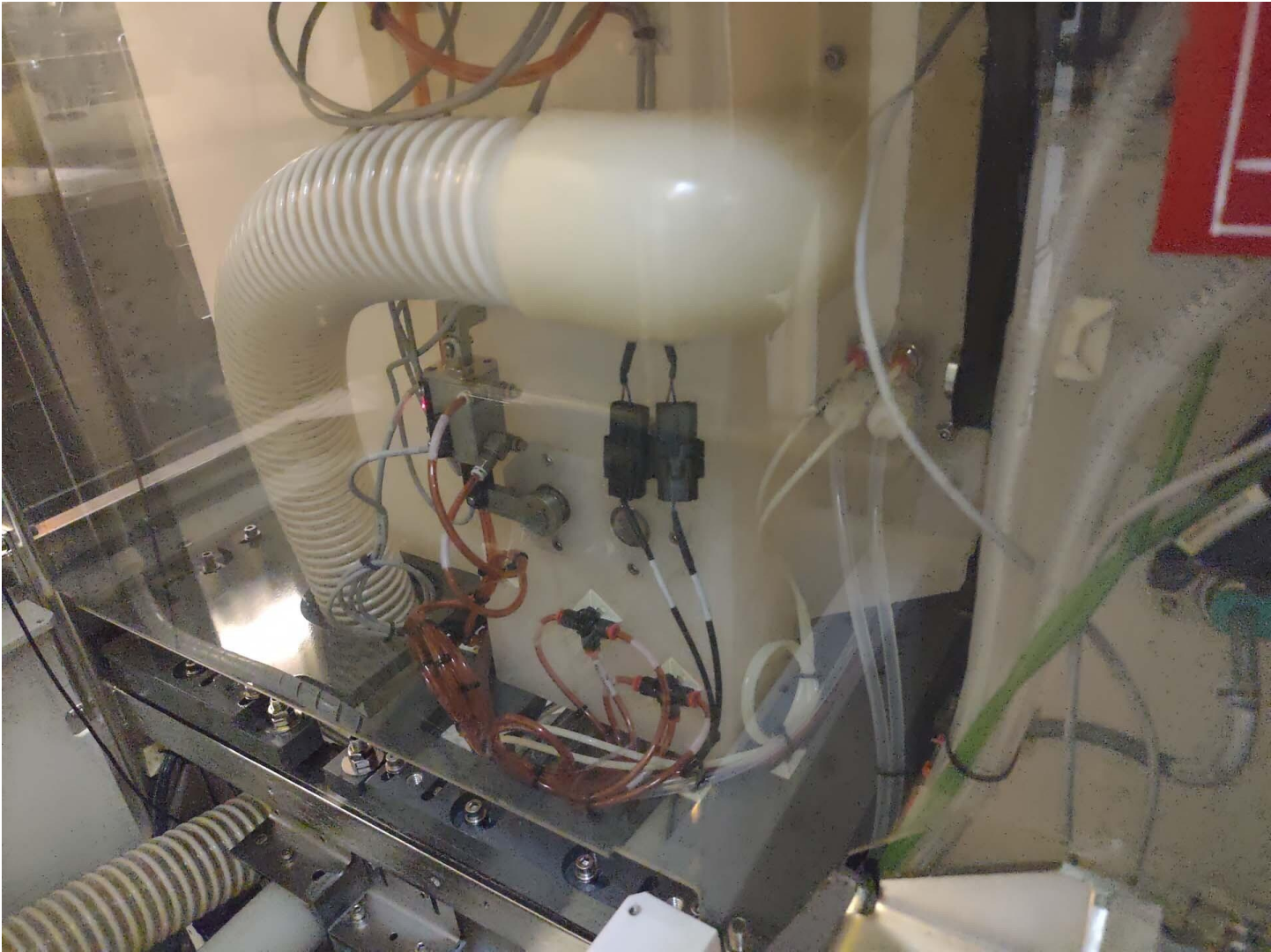
DI WATER MAIN VALVE

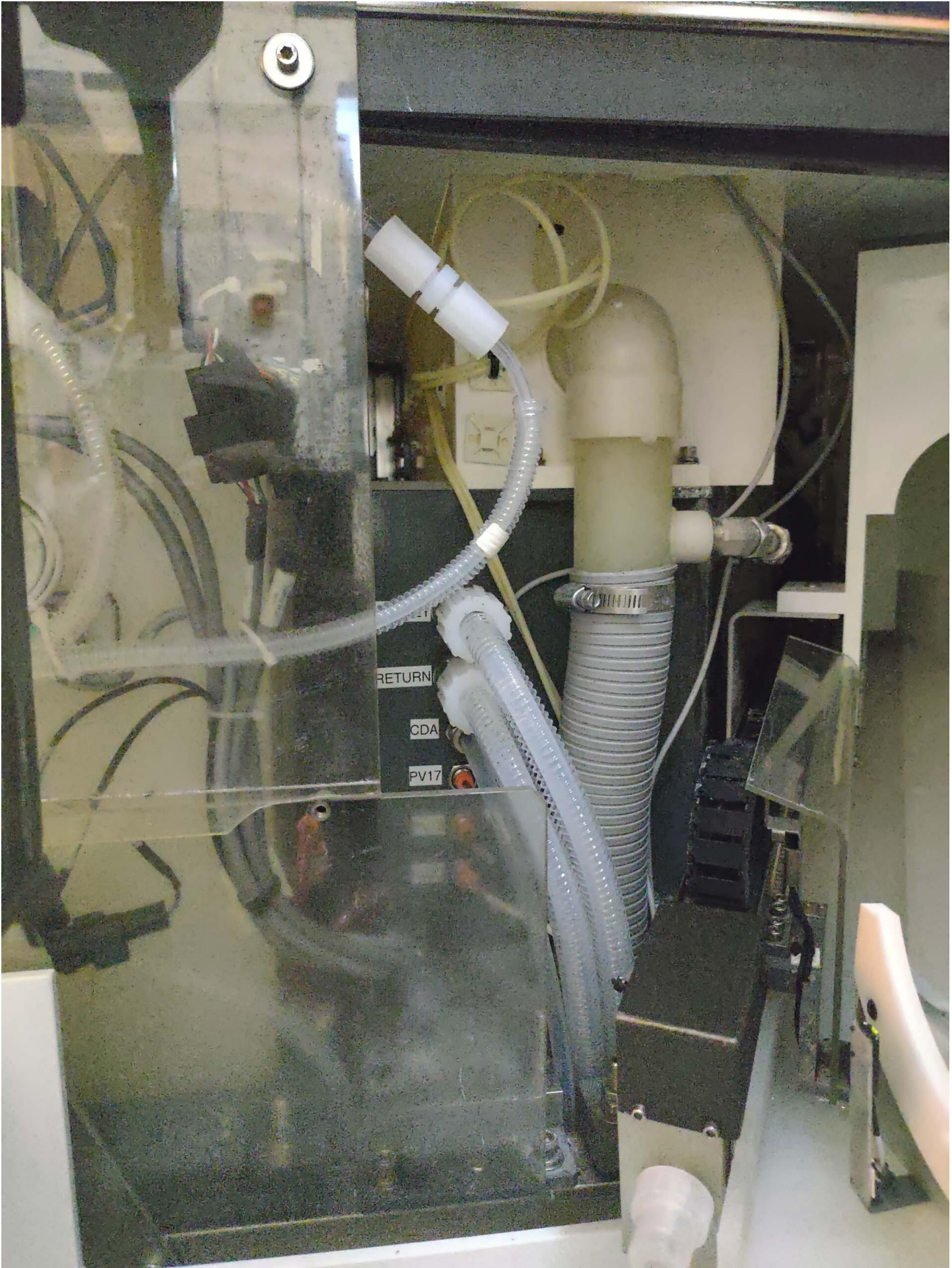






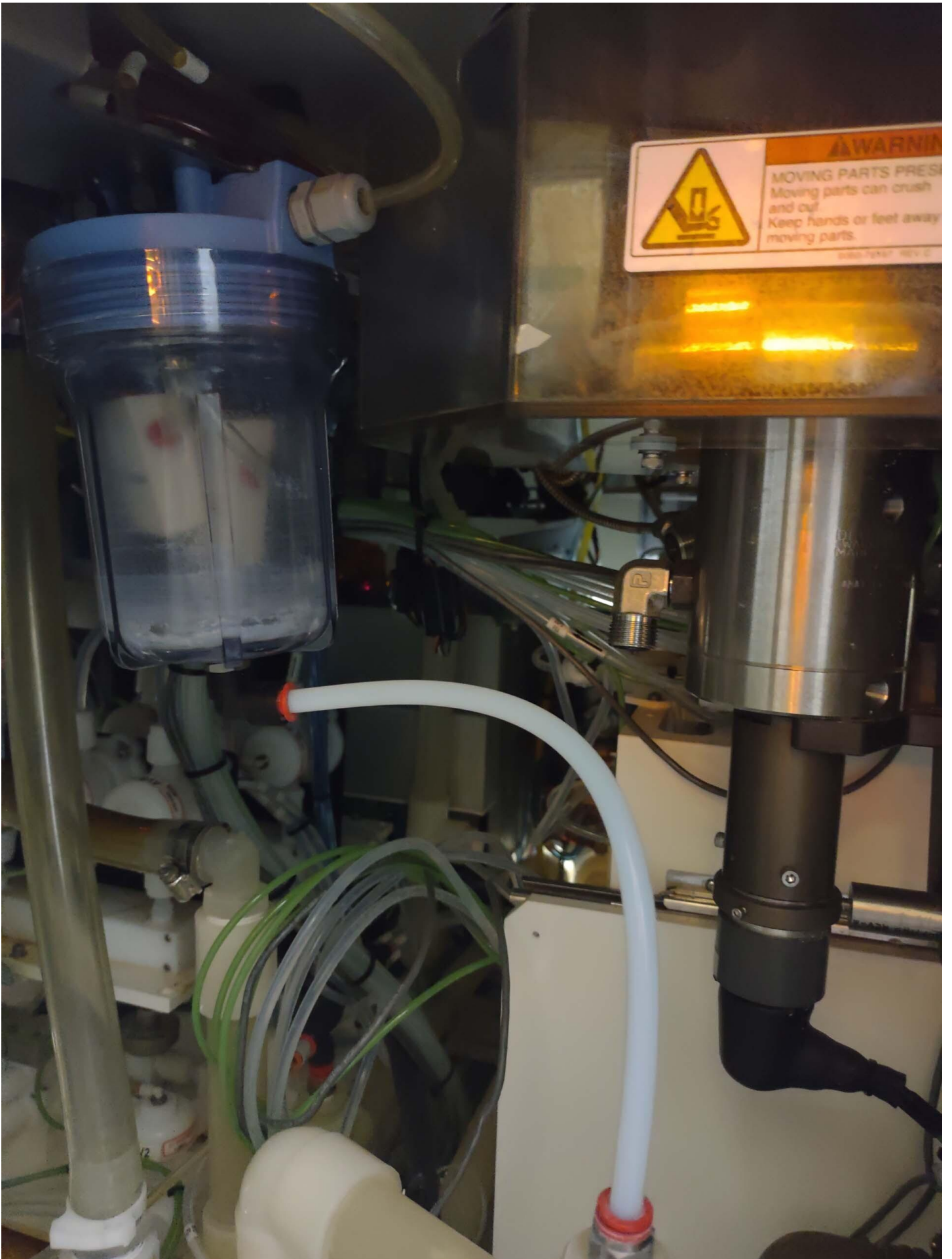


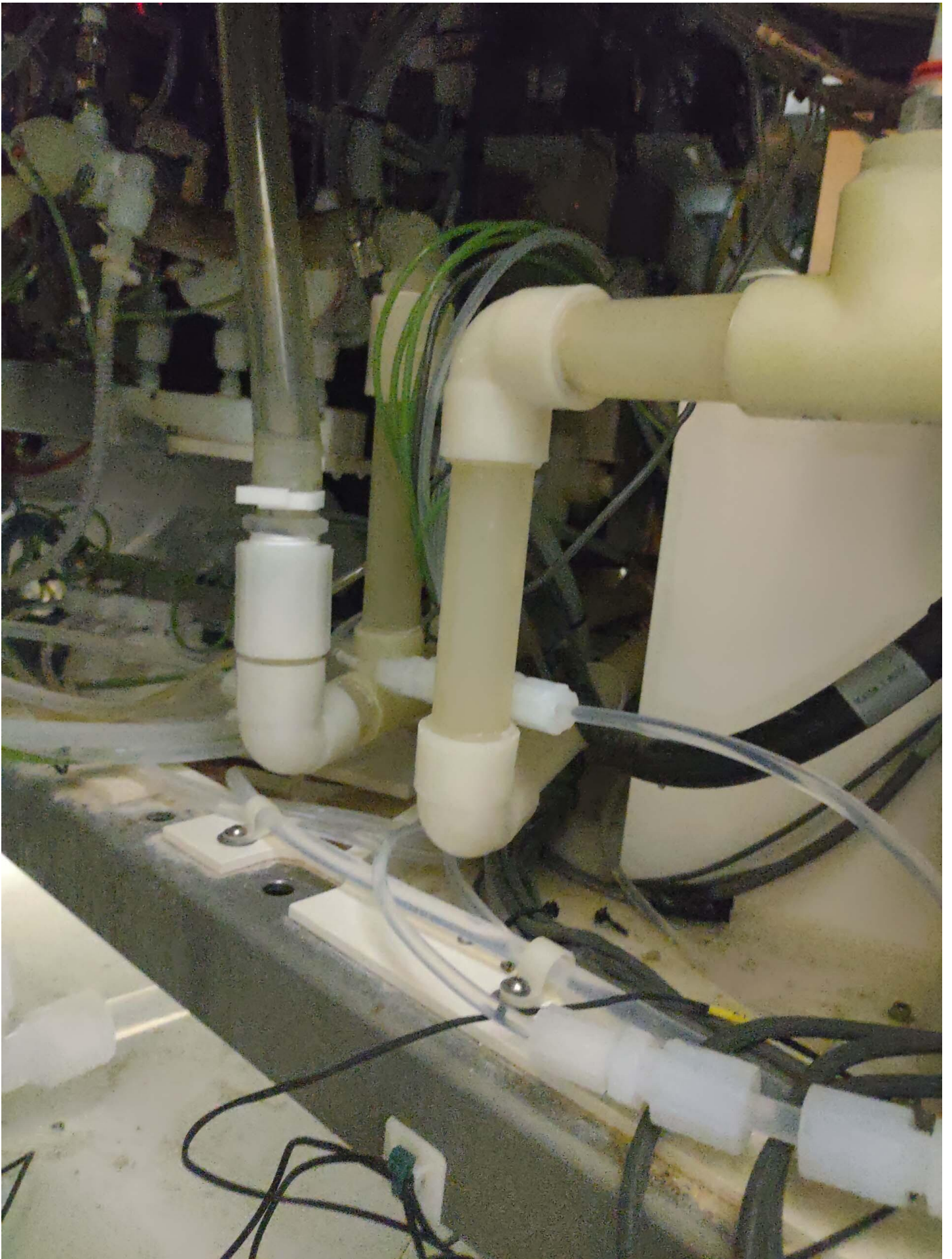














HEAD 1

HEAD 2

140
AP1
100

0.0

0.1

0.0

0.0

0.0

0.0

0.0

RR

MEM

IT

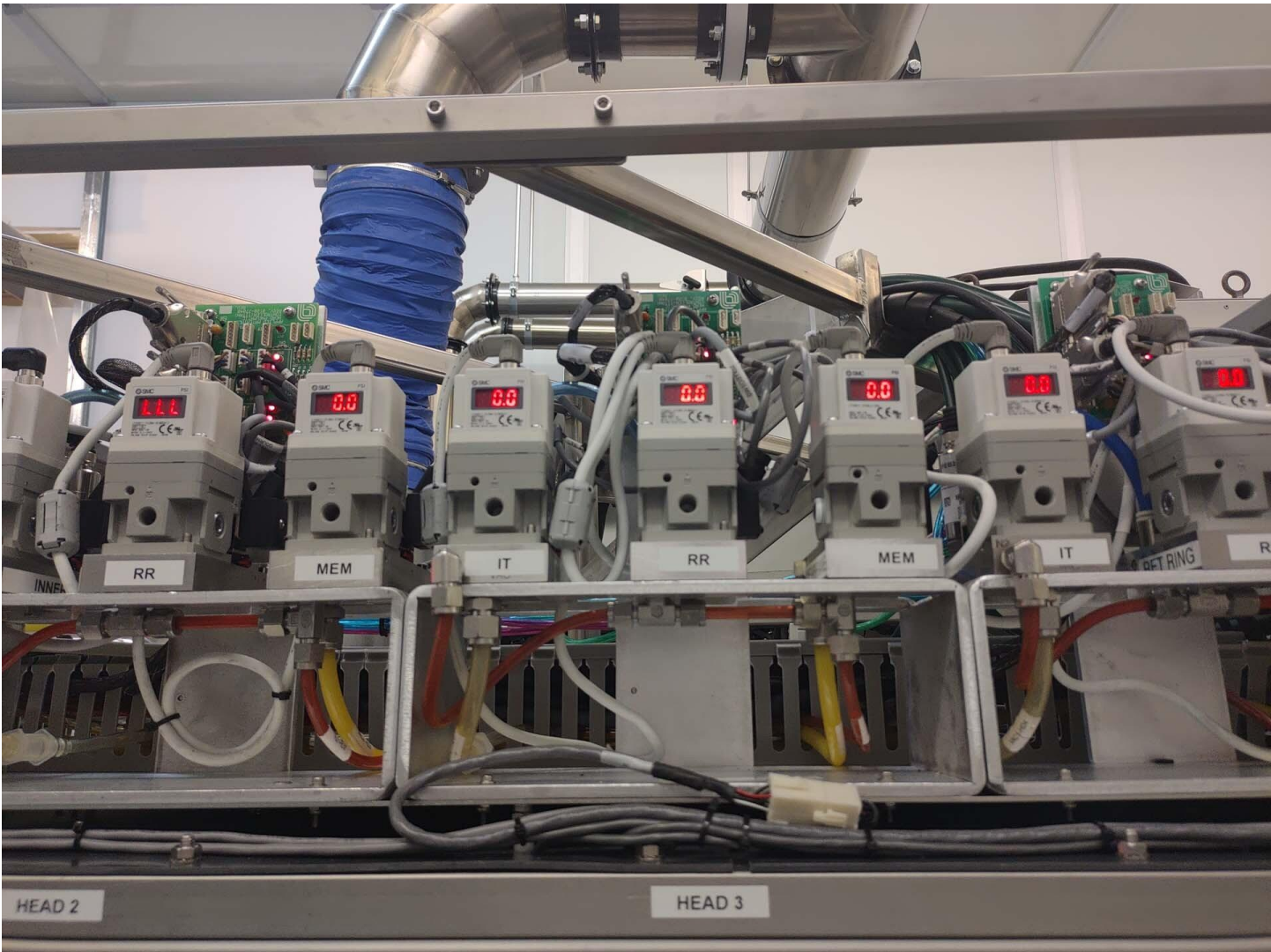
RR

MEM

IT

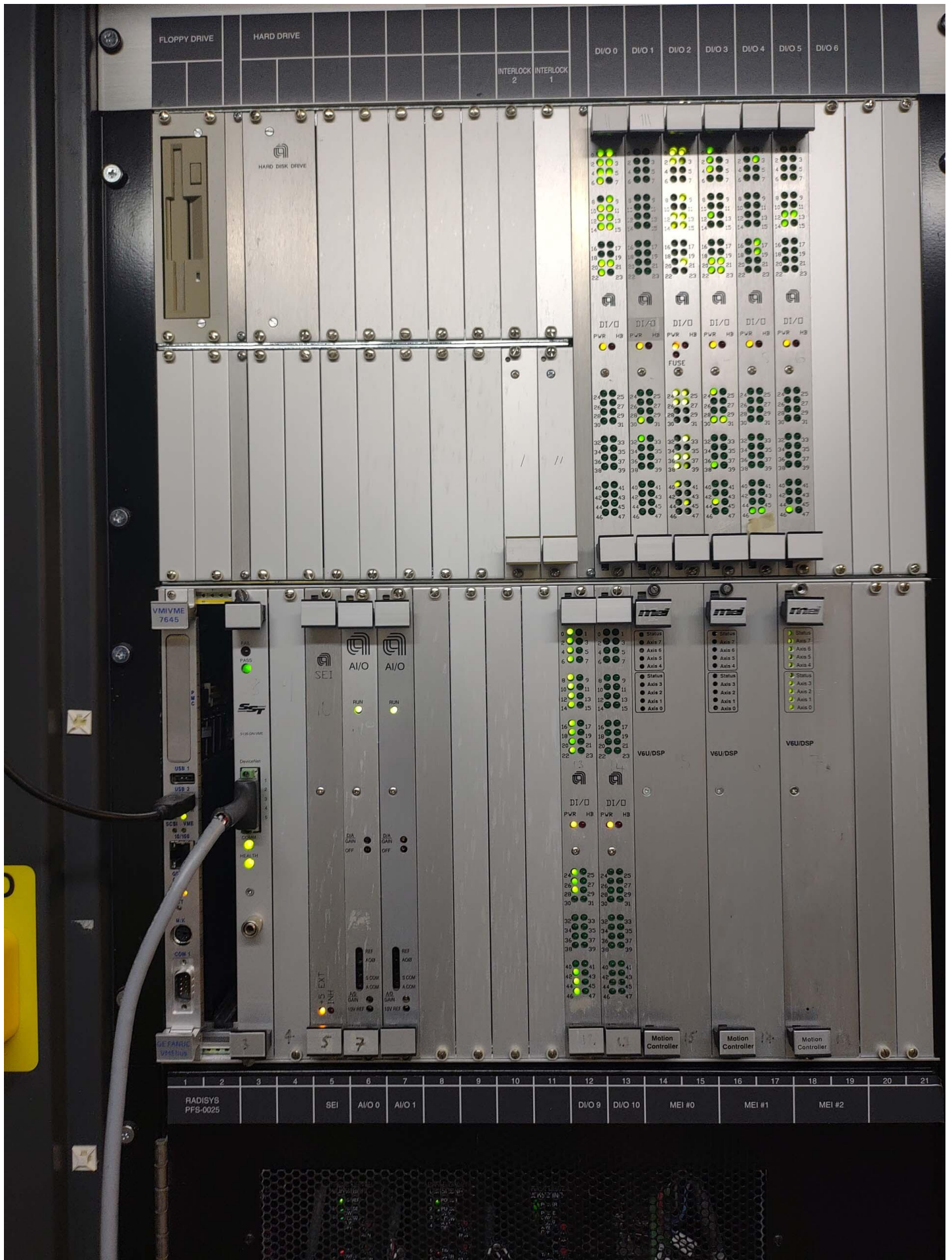
VAC

GRAVE









FLOPPY DRIVE HARD DRIVE INTERLOCK 2 INTERLOCK 1 DI/O 0 DI/O 1 DI/O 2 DI/O 3 DI/O 4 DI/O 5 DI/O 6

HARD DISK DRIVE

DI/O 0 DI/O 1 DI/O 2 DI/O 3 DI/O 4 DI/O 5 DI/O 6

PWR HB PWR HB PWR HB PWR HB PWR HB PWR HB

FUSE

24 25 26 27 28 29 30 31 32 33 34 35 36 37 38 39 40 41 42 43 44 45 46 47

VMI/VME 7645

SEI AIO AIO

Run Run

V6U/DSP V6U/DSP V6U/DSP

Station Axis 7 Axis 6 Axis 5 Axis 4 Axis 3 Axis 2 Axis 1 Axis 0

DI/O DI/O

PWR HB PWR HB

Motion Controller Motion Controller Motion Controller

1 2 3 4 5 6 7 8 9 10 11 12 13 14 15 16 17 18 19 20 21

RADISYS PFS-0025 SEI AIO 0 AIO 1 DI/O 9 DI/O 10 MEI #0 MEI #1 MEI #2



